



Instruction to create a Firmware CD for: DVR 1600ME

1. Please copy or extract the firmware:

- UPDATE.VER
- DVR1600M388CE.bin
- D041105N.B00
- NOTUSED

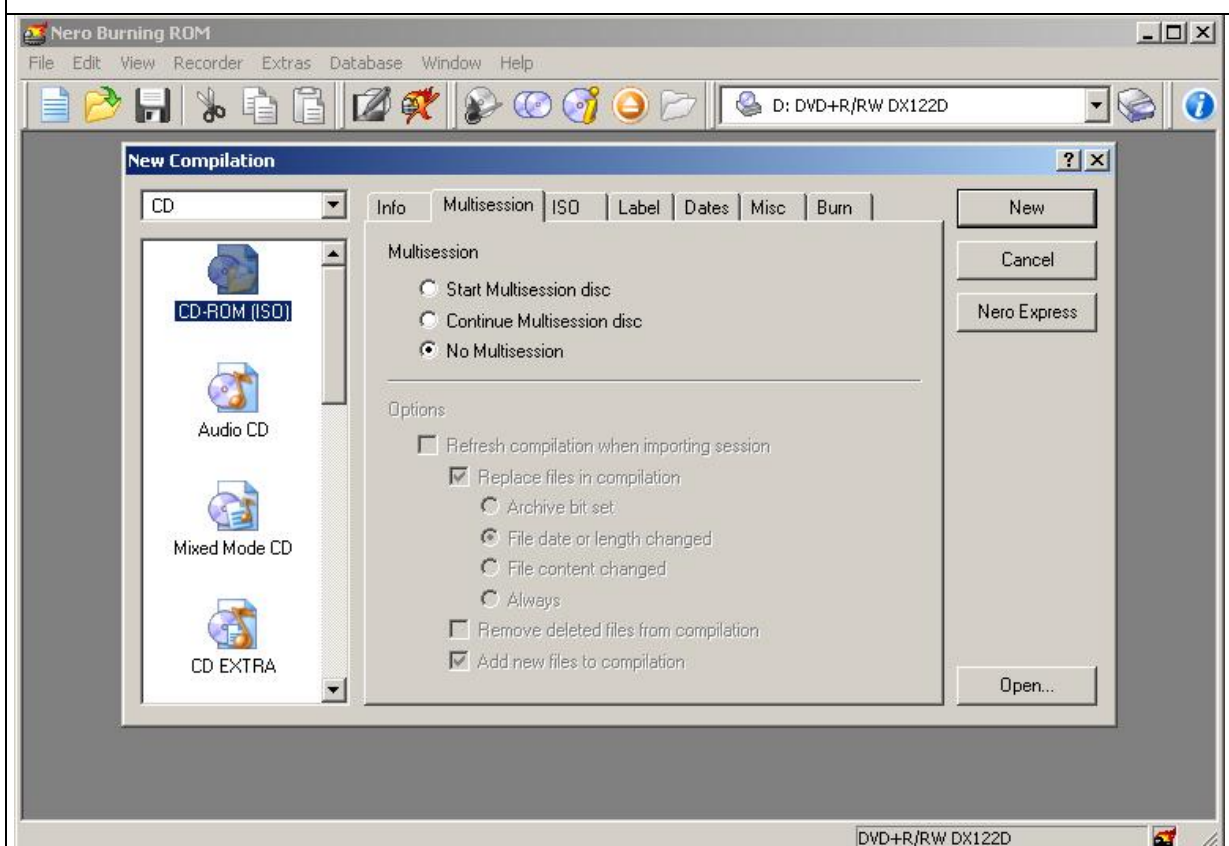
to your hddisk

2. Please use Nero Burning Rom (not Nero Express) as recording software, we here had bests results. Alternately, of course, you may use different recording software, but placement of settings may varie. In case you get problems please ask the recording-software manufacturer.

3. Please use a CD-R. In case you want to use a CD-RW please be sure your recording software is able to verify the recorded data in a seperate step after recording as Nero Burning Rom will do. Put this empty CD-R or CD-RW into your CD-recorder

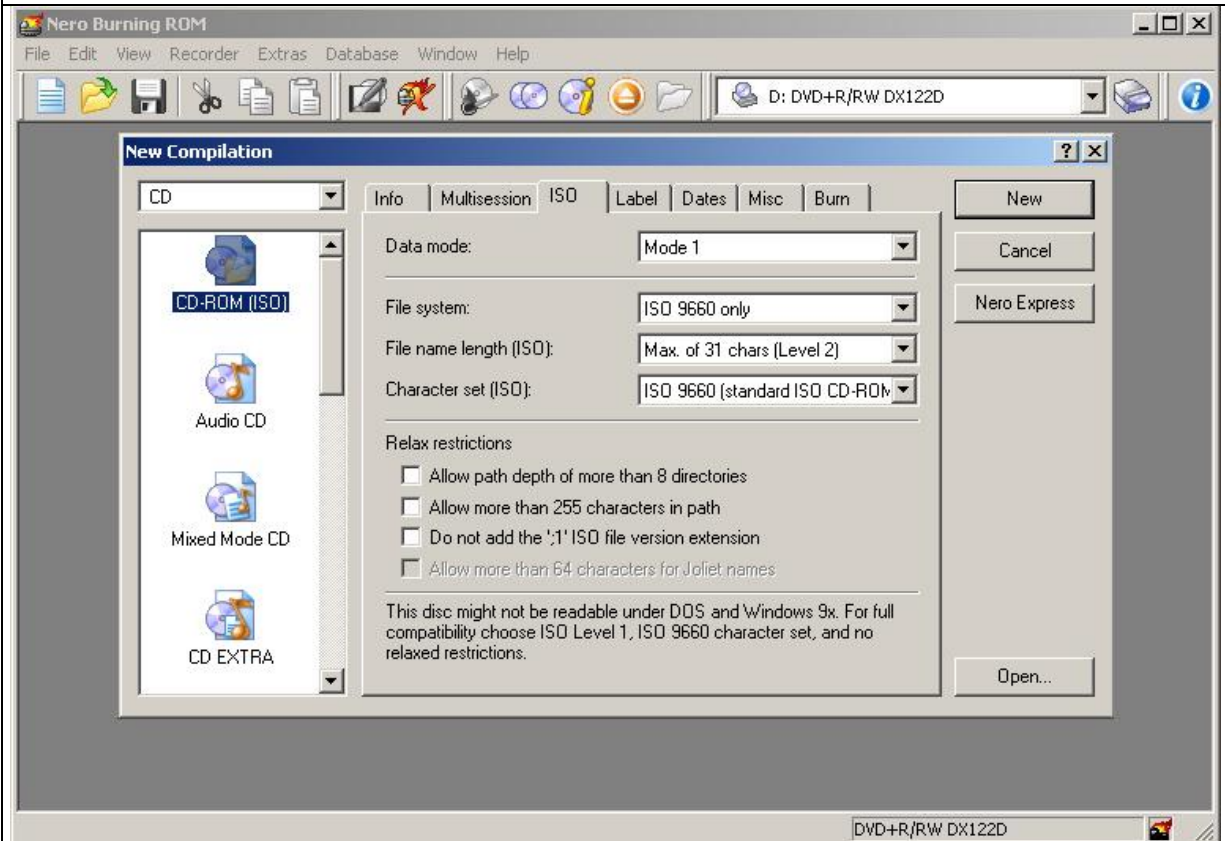
4. Please start Nero:

5. Choose '**CD-ROM ISO**' and '**no Multisession**' as described in picture:

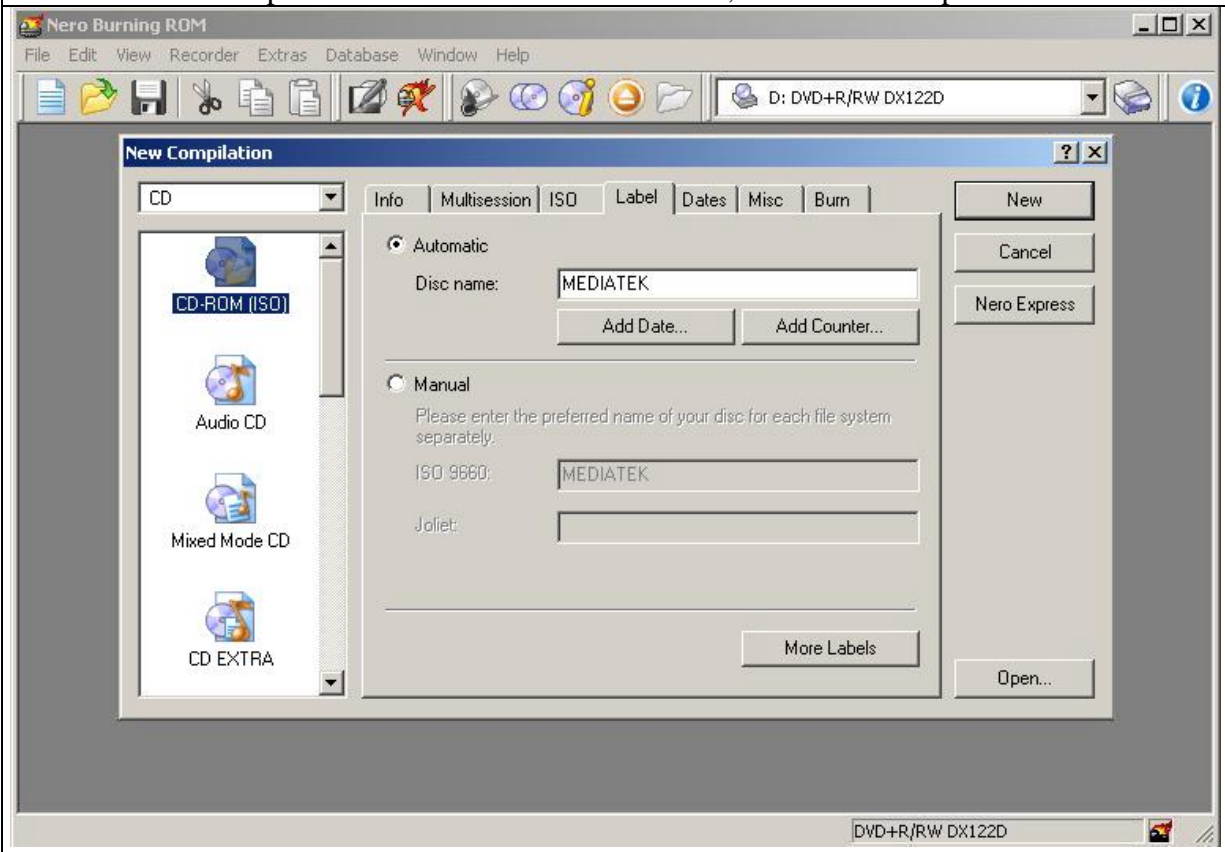


6. At the tab 'ISO' please select following as described in the picture below:

- | | |
|------------------------------------|------------------------------|
| - Mode 1 | - Max. of 31 chars (Level 2) |
| - ISO 9660 only | - ISO 9660 |
| - loosen ISO-Restrictions: no tick | |

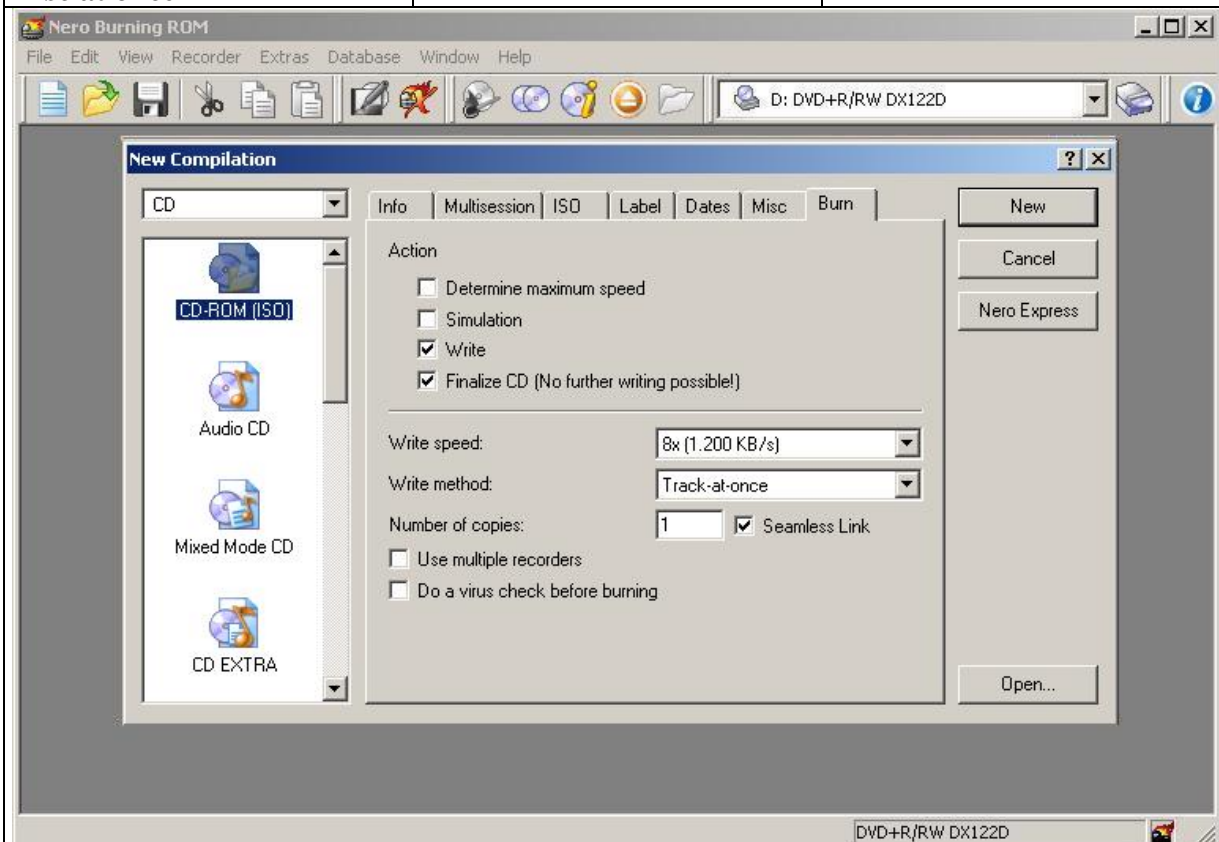


7. At the tab 'Titel' please name the CD 'MEDIATEK', as described in picture below:



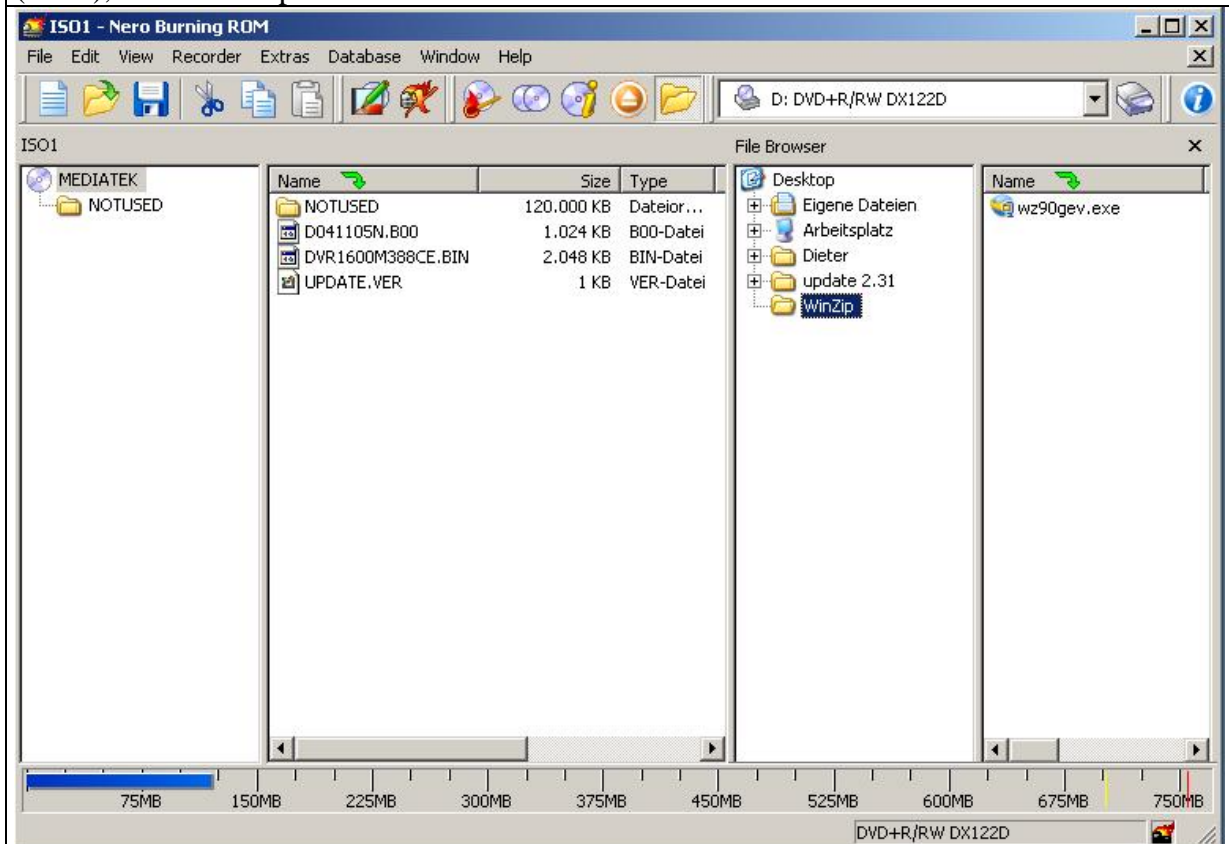
8. At the tab 'record' please choose following, as described in picture below:

- Write: activate	- Finalize CD: activate	- Writespeed: max. 8x
- Write method Track at once or Disc at once	- copies: 1	- Seamless Link: activate



9. after that please press the button 'NEW'

10. put per "Drag and Drop" the files: 'UPDATE.VER', 'DVR1600M388CE.BIN', 'D041105N.B00' and 'NOTUSED' from your harddisk (File Browser) into the Nero-Browser (ISO1), as shown in picture below:



In case the ISO settings are correct, now the filenames on the left are shown in capital letters, as you can see in the picture. If not please check the settings of step 6.

11. Klick now the icon in the top bar for 'record CD'

12. Please confirm the already selcted settings by selecting 'record'. Hereafter the CD will be recorded.

13. Please switch on the recorder.
14. Open the tray.
15. Put the recorded FMW-CD into the player.
16. Close the tray.
17. When be asked, please follow the instructions.
18. After a short while the tray will open. Please remove the CD.

IMPORTANT: the update process is still working. Do not switch off the player. Do not close the tray.

20. At end of Update procedure the tray will close automatically and the player switches off and switch on itself.
21. Now the recorder started in Virgin Mode. When be asked, please follow the instructions. For more information consult the manual.
22. Press 'Setup' to enter the OSD. Select the menu 'General' by moving the curser, then press 'Enter'.
23. Check the Firmware-version: last line the last numbers at the right show the version number.
24. Now, the recorder is ready for use.